



REINFORCE

REsearch INfrastructures FOR Citizens in Europe

Discovering the unexplored deep marine environment

Submarine Intelligent Listening into KM3Env :
Detect, Classify & Localize Cetaceans

Hervé Glotin & Dyni team

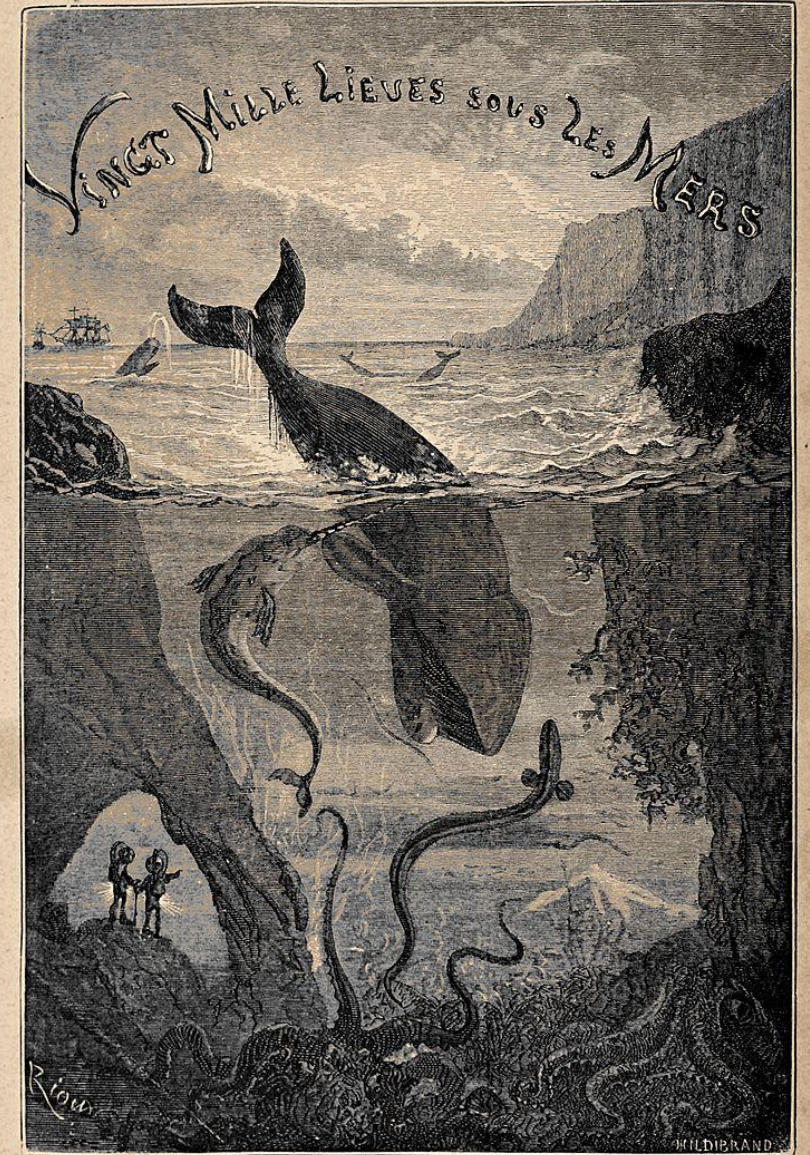
AI Chair in Bioacoustics

Computer Science & Systems Lab. LIS CNRS Toulon

glotin@univ-tln.fr

WEBINAR

February 26, 2021, 15:00 CET



— J. HETZEL, ÉDITEUR —



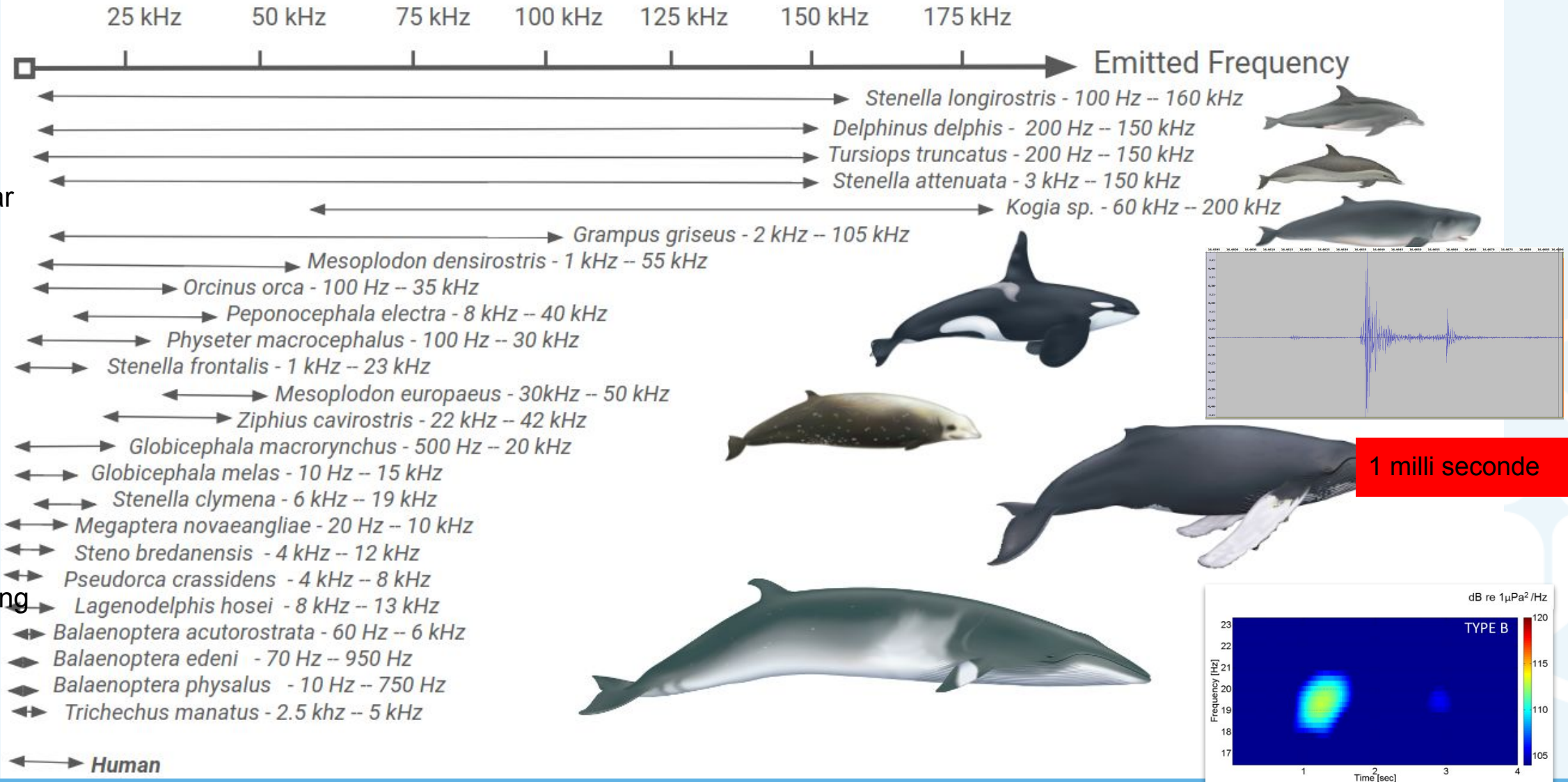
© Copyright 2019 – This project has received funding from the European Union's Horizon 2020 project call H2020-SwafS-2018-2020 funded project Grant Agreement no. 872859

The cetaceans... are just here !

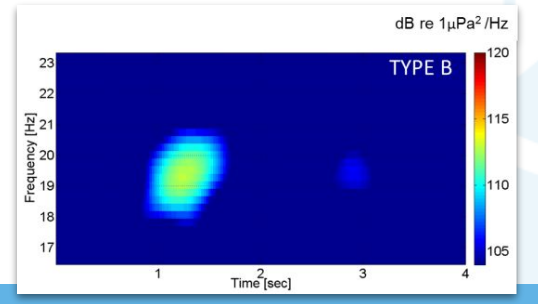
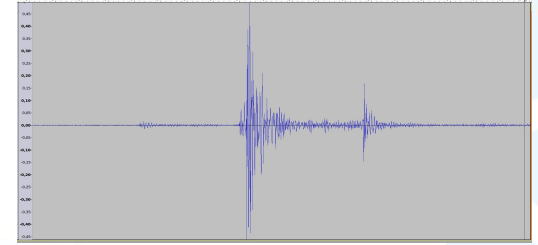


Which sound do they emit and why ?

Sonar

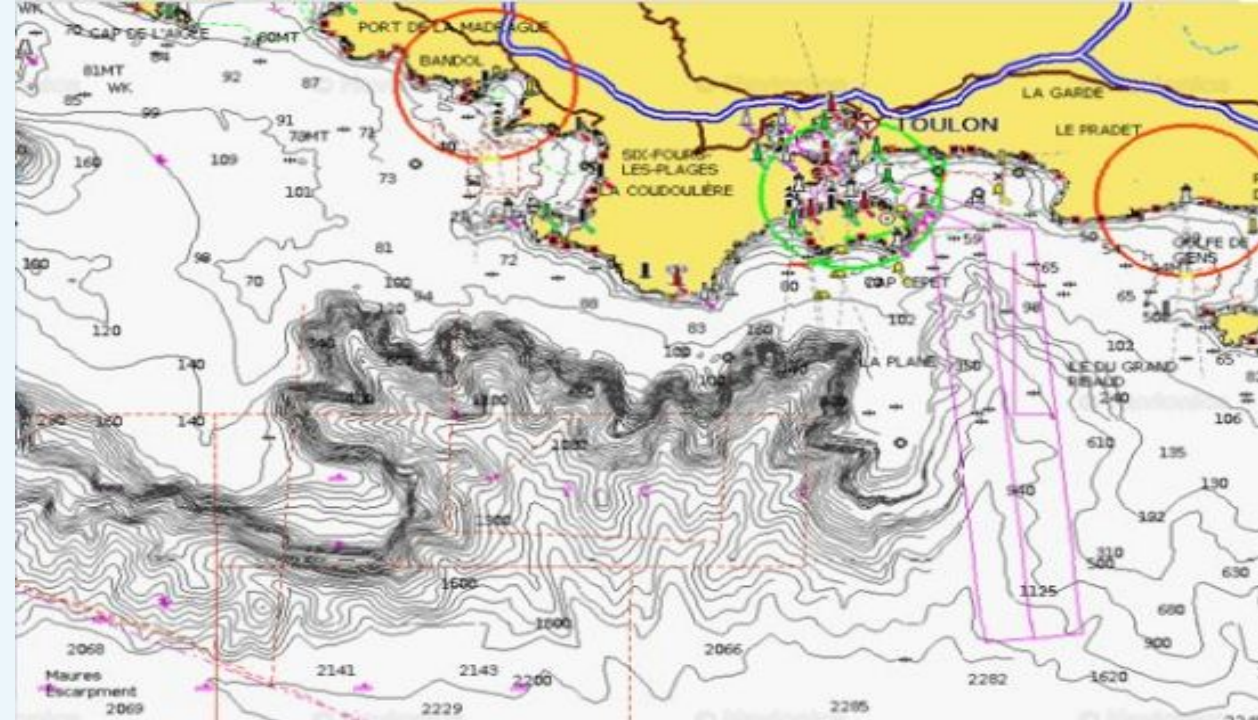


Voicing

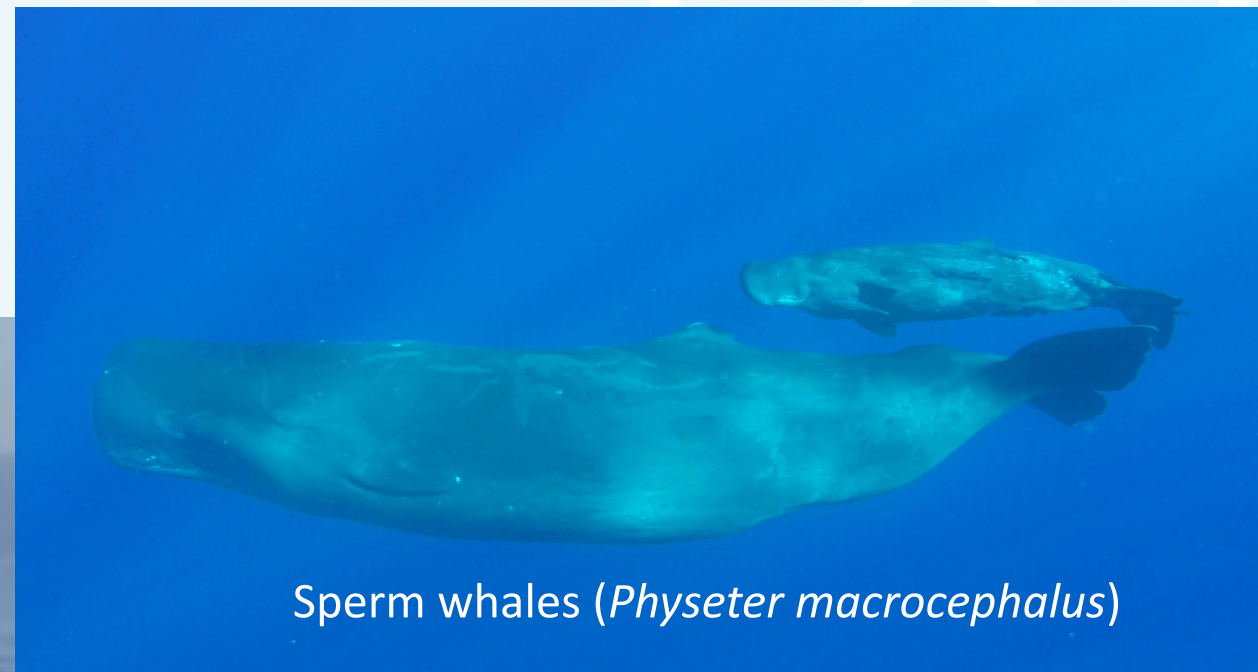


1. Motivation

- Endangered species
- Passive acoustics to study cetacean
- 3D tractography of deep dives from the surface : learn from what they listen to
- Monitoring of marine traffic to avoid collisions



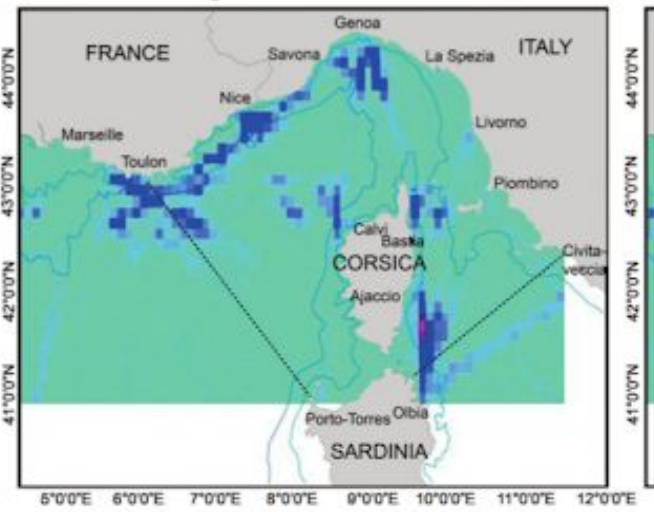
Sicié Canyon, Toulon, France



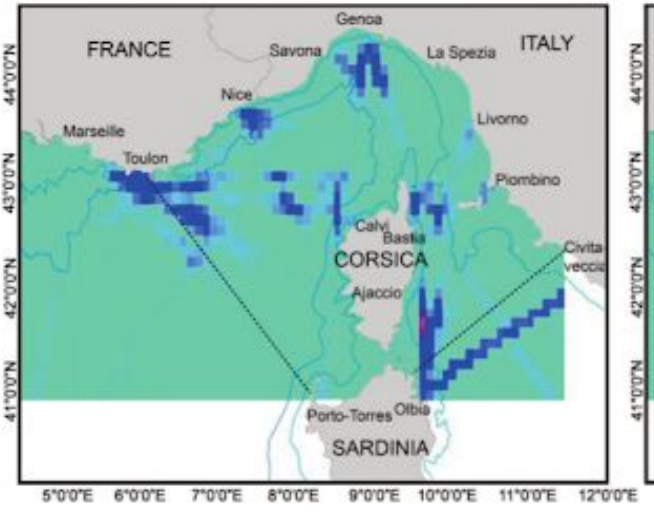
Sperm whales (*Physeter macrocephalus*)

The risk of collision : ~ 12 / year

Risk area of collision between sperm whale (kriging) and all large commercial vessels in summer



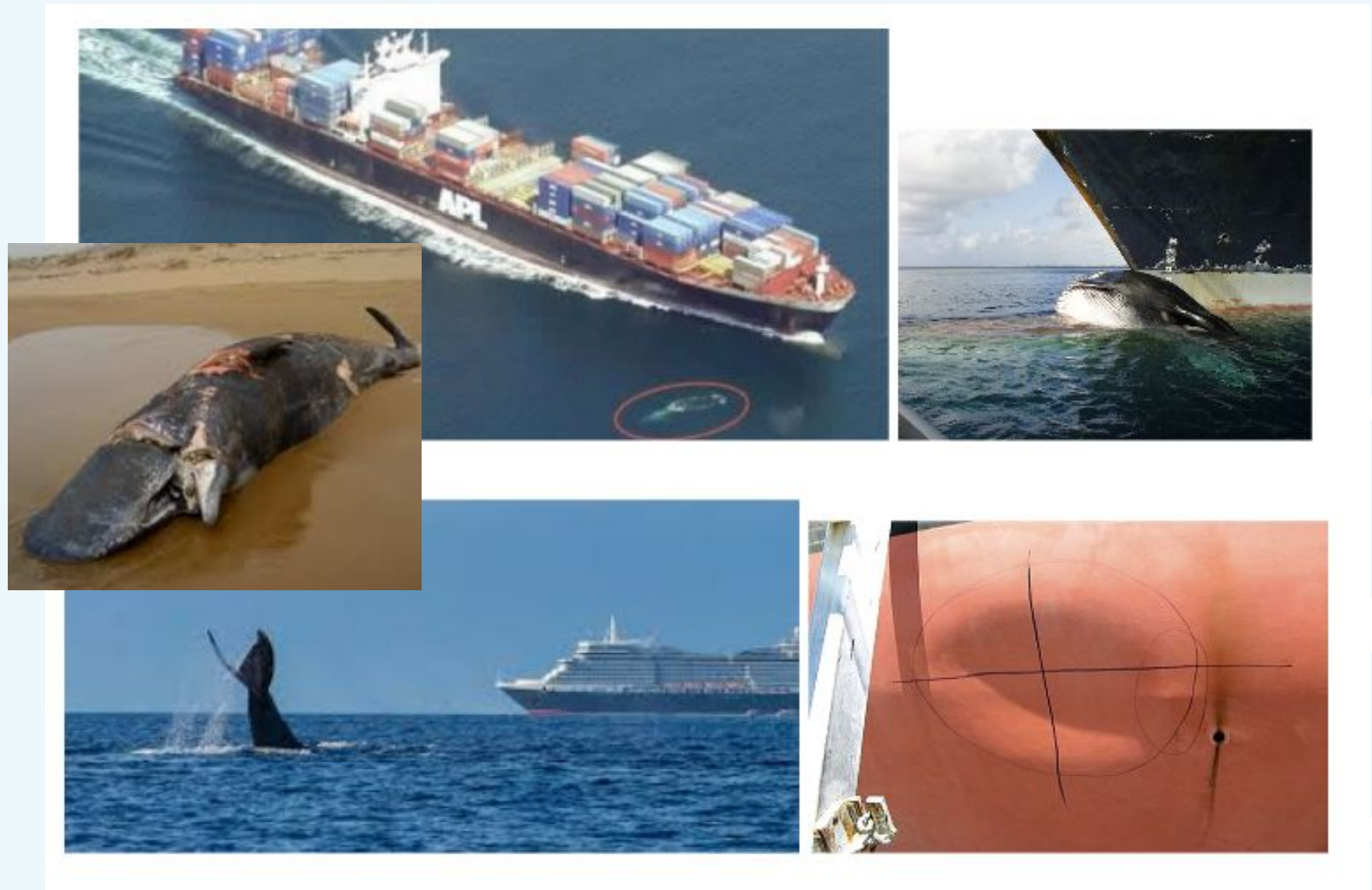
Risk area of collision between sperm whale (kriging) and conventional ferries in summer

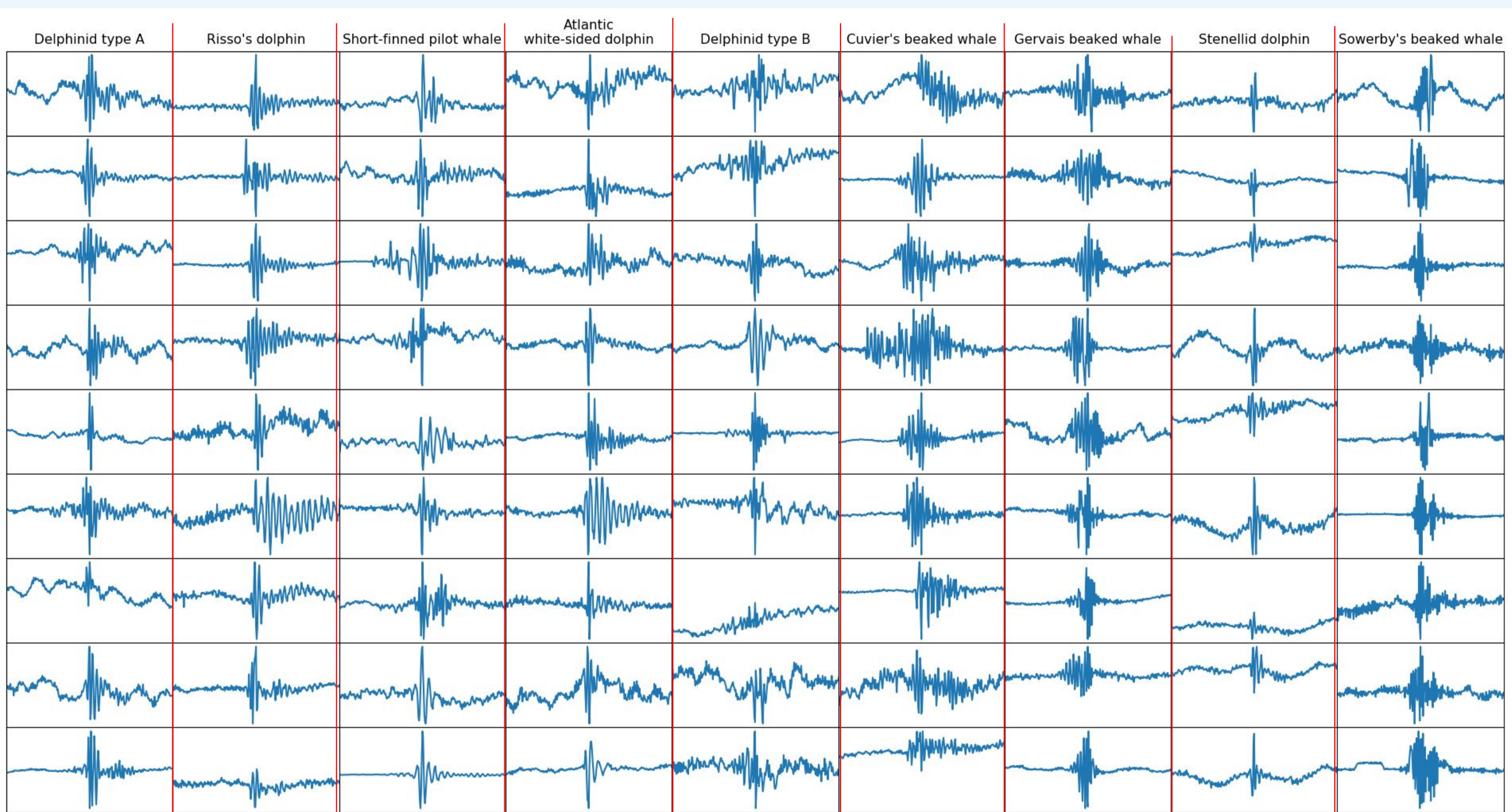


Risk of collision
■ High
■ Low

Isobath
 — 200m
 — 2,000m
 ... PELAGOS Sanctuary

N
 W — E
 S
 0 25 50 100





Other BIOSONARS (Ferrari Glotin IJCNN2020)

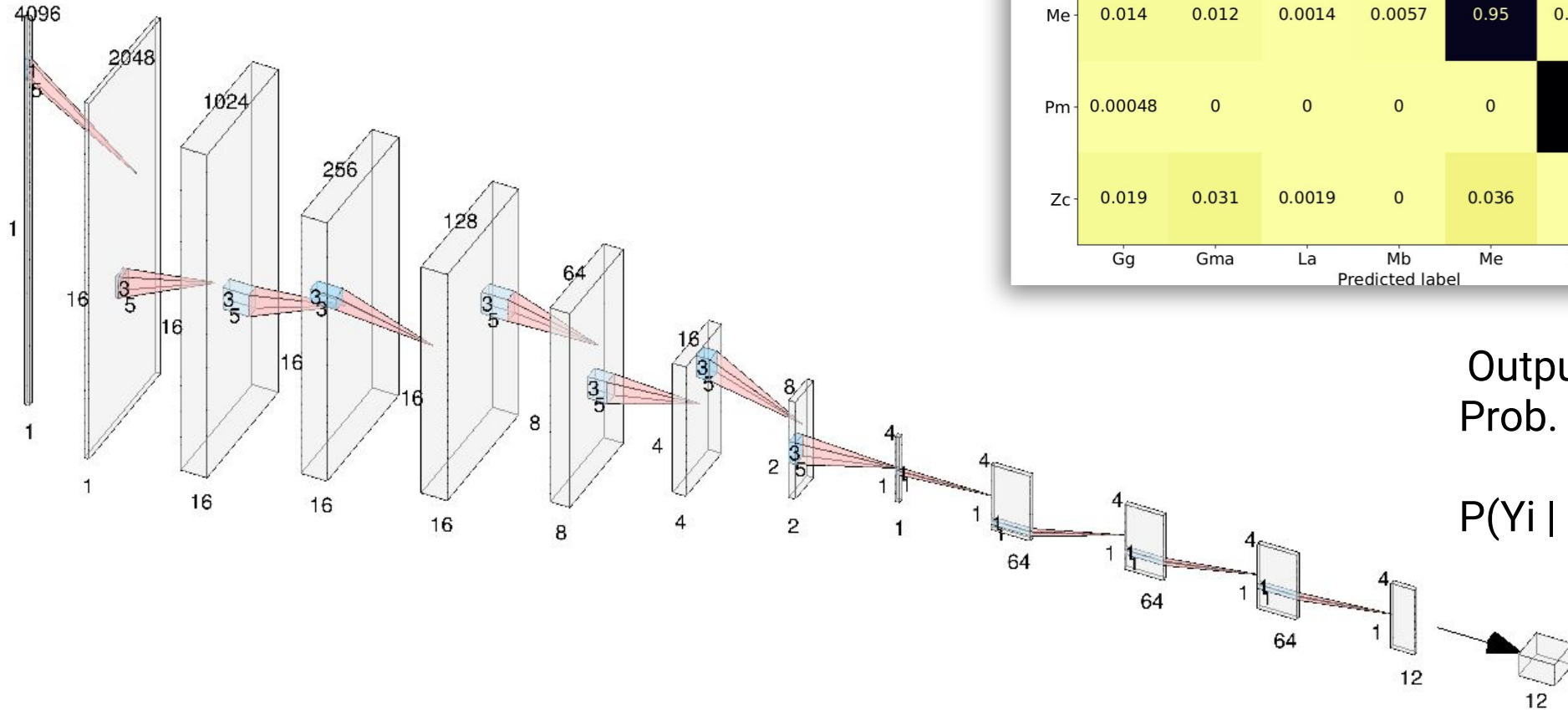
Detect and class Biosonar with AI

Convolutional Deep Learning : 95% ok!

(Ferrari, Glotin et al. IJCNN 2020)

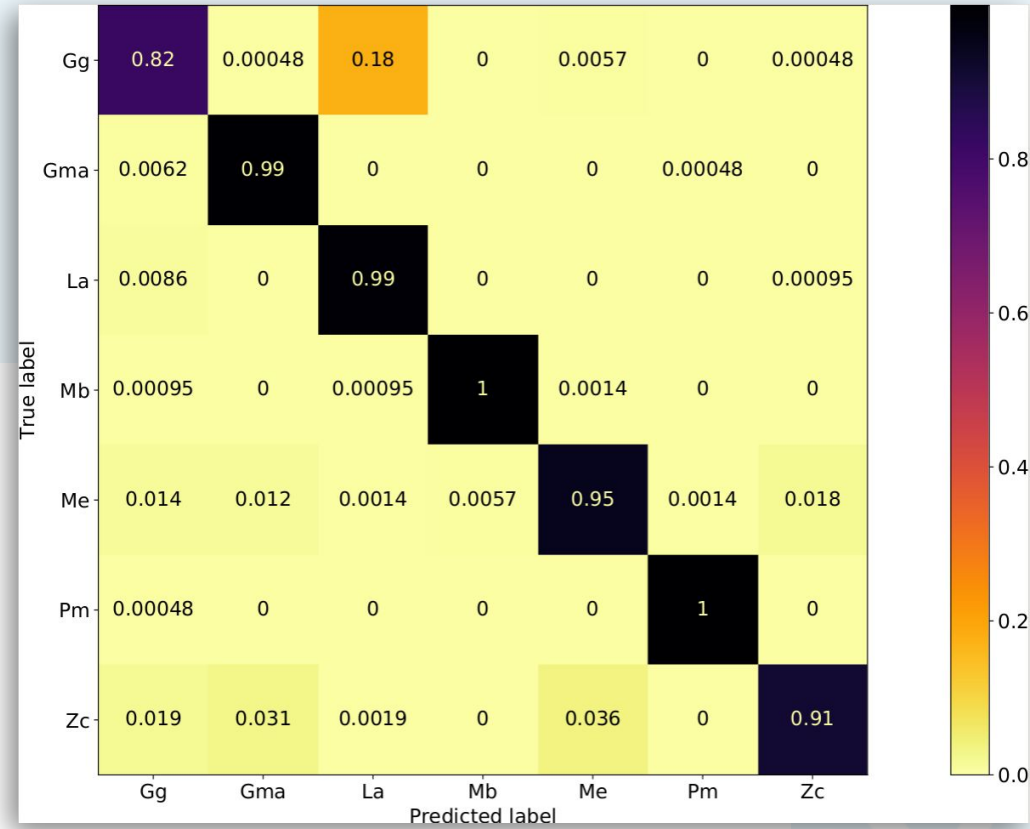


RAW
WAV
Input
signal



Output
Prob.

$$P(Y_i | X)$$

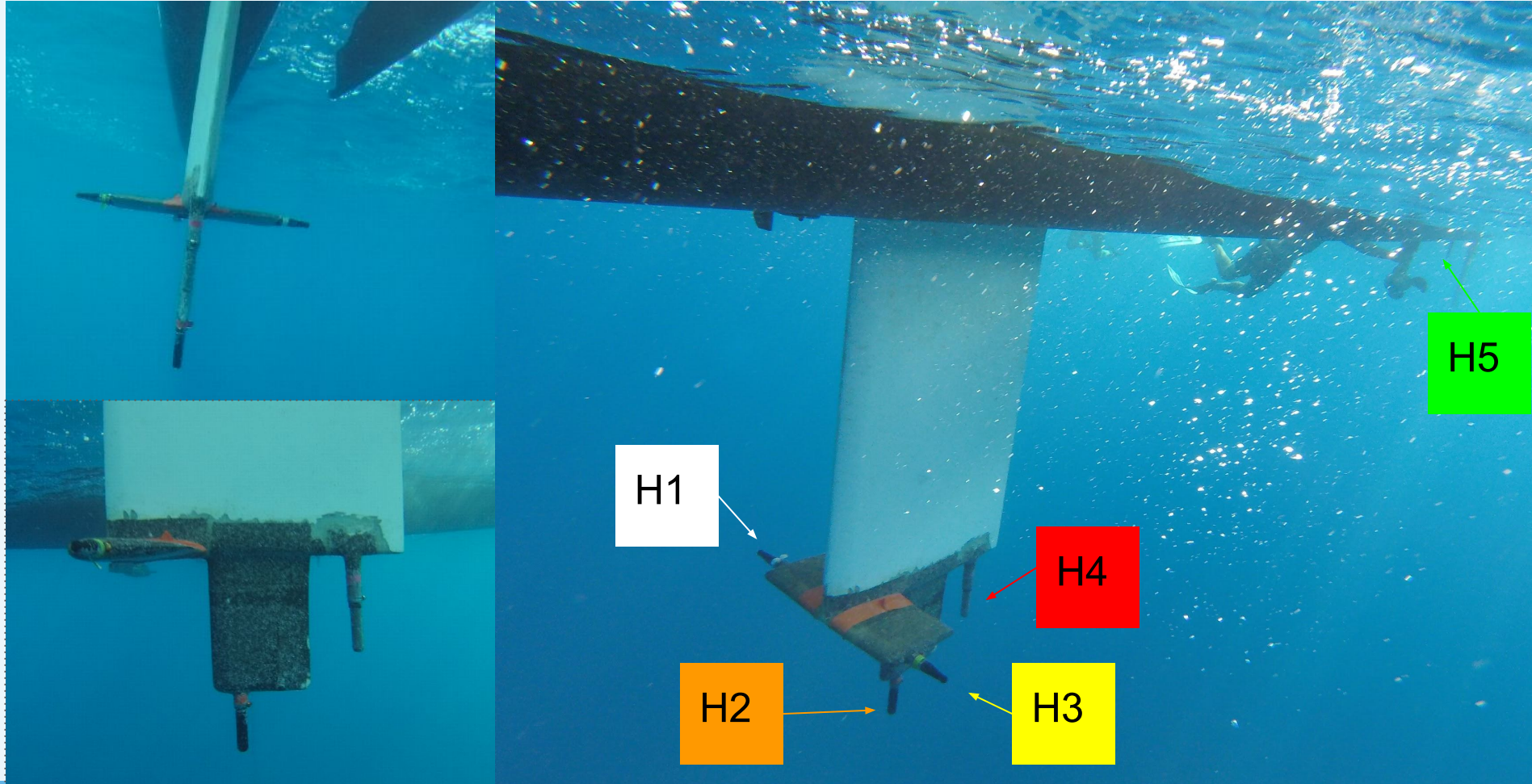




REINFORCE
REsearch INfrastructures FOR Citizens in Europe

4. Design of the antenna

Antenna video : <http://sabiod.org/seeabyss>



Example of Clear dolphin clicks, TDOA measures, recorded on 5 channels



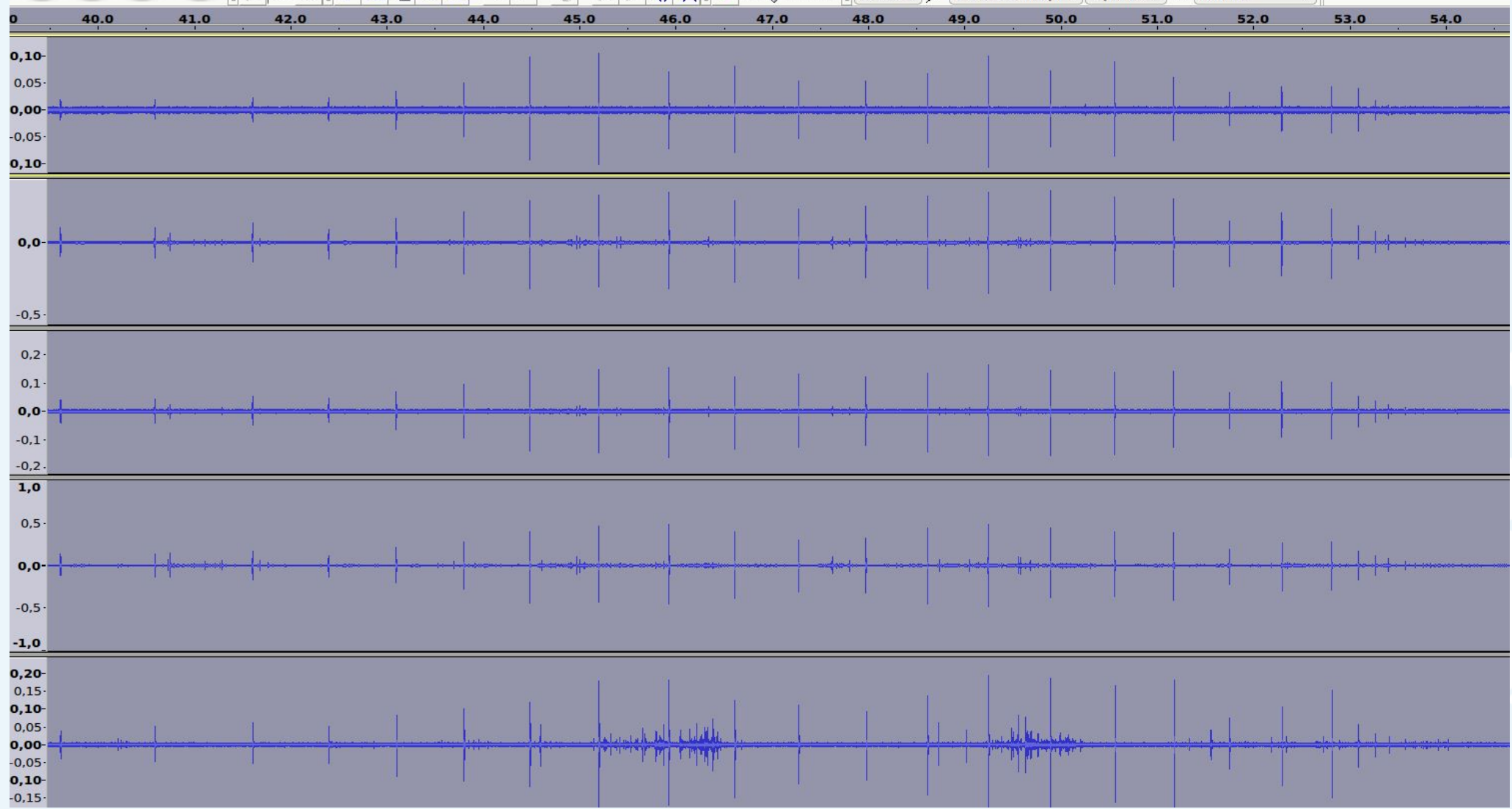
Direct

Surface echoes

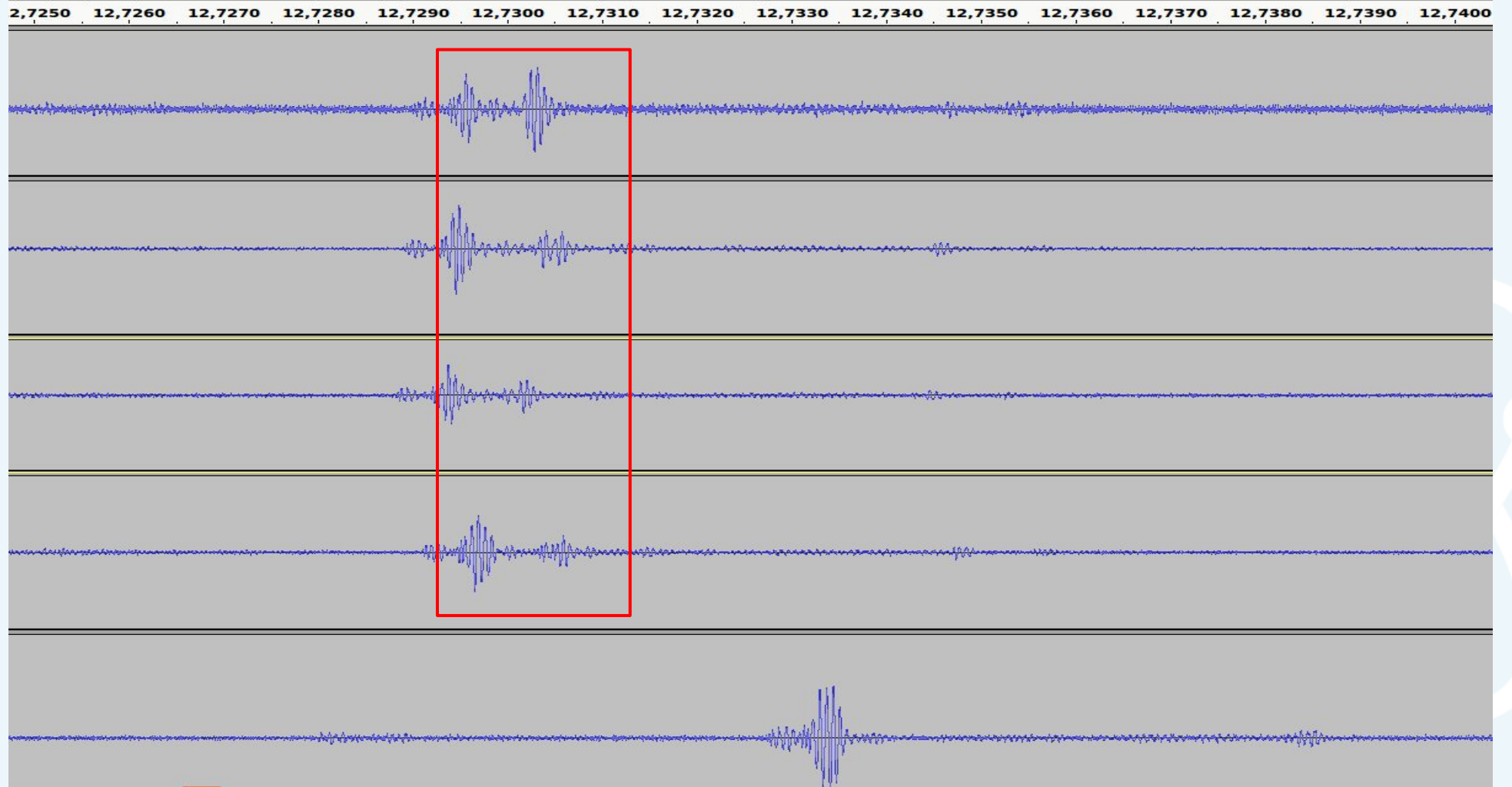


REINFORCE

REsearch INfrastructures FOR Citizens in Europe



The time delays... tell us a lot



12th of August 2018 : 2 hours of recordings of a single sperm whales South of Toulon

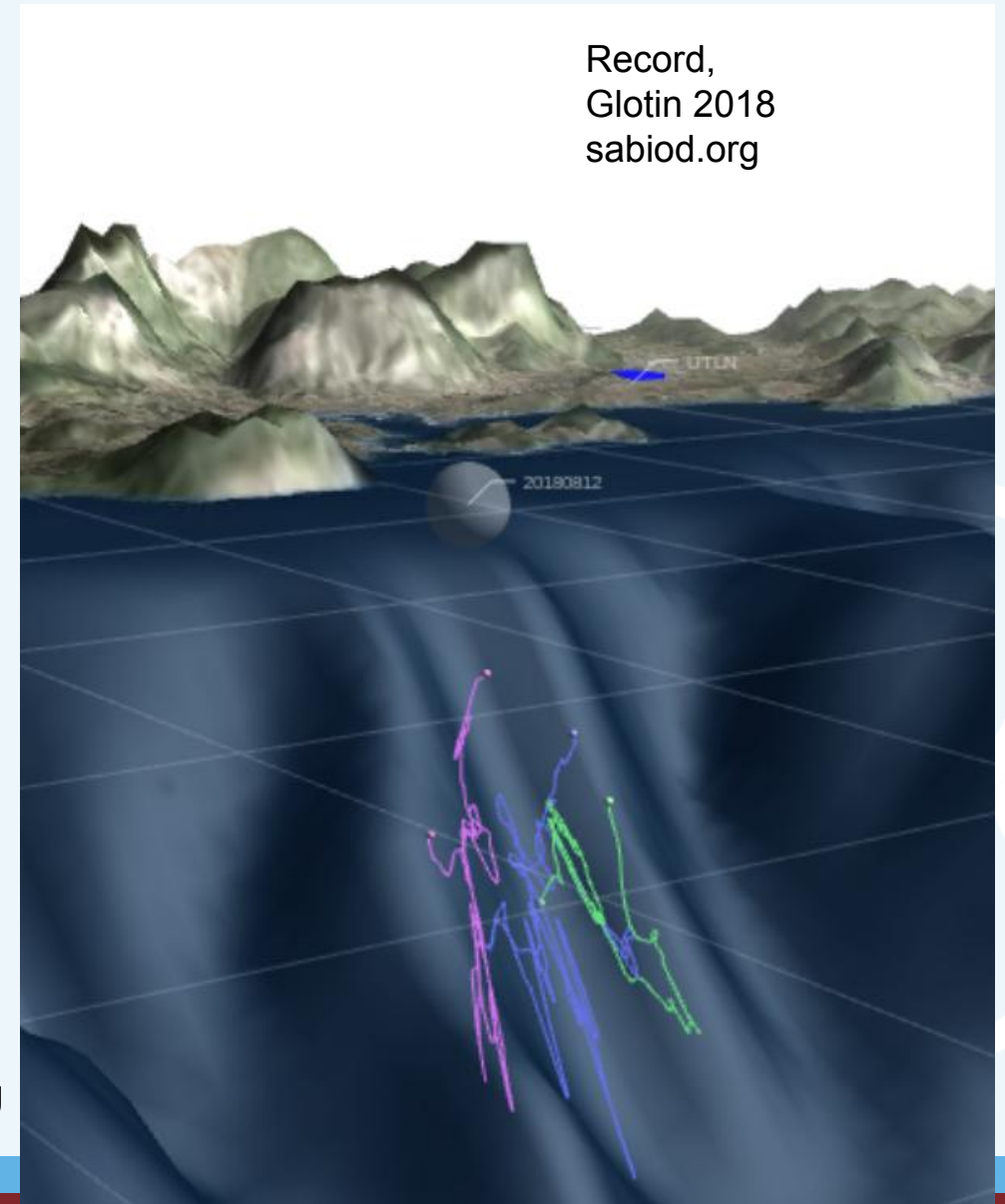


Example of 3 track in front of KM3Env

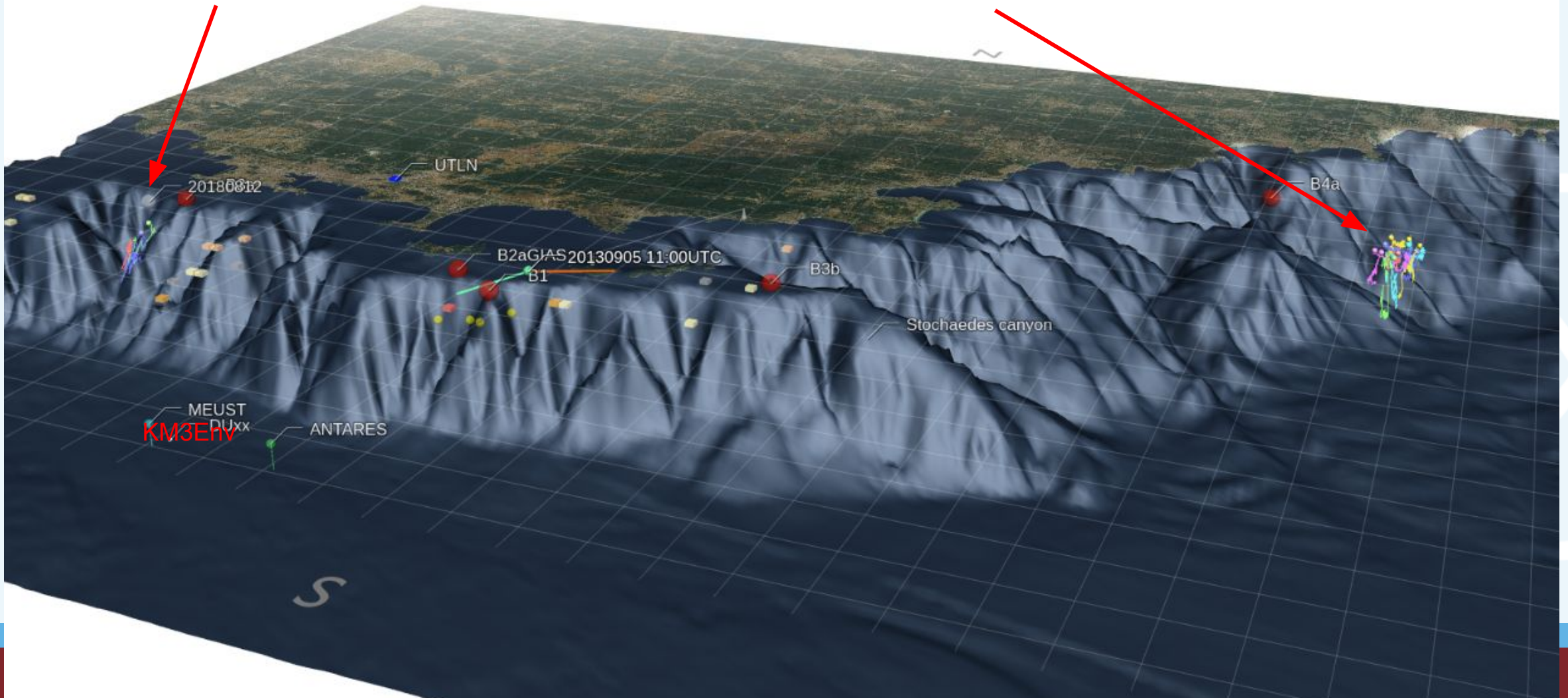
- 3 tracks (green, blue, pink) of the Cachalot,
- 50 minutes each, getting to -1000 m



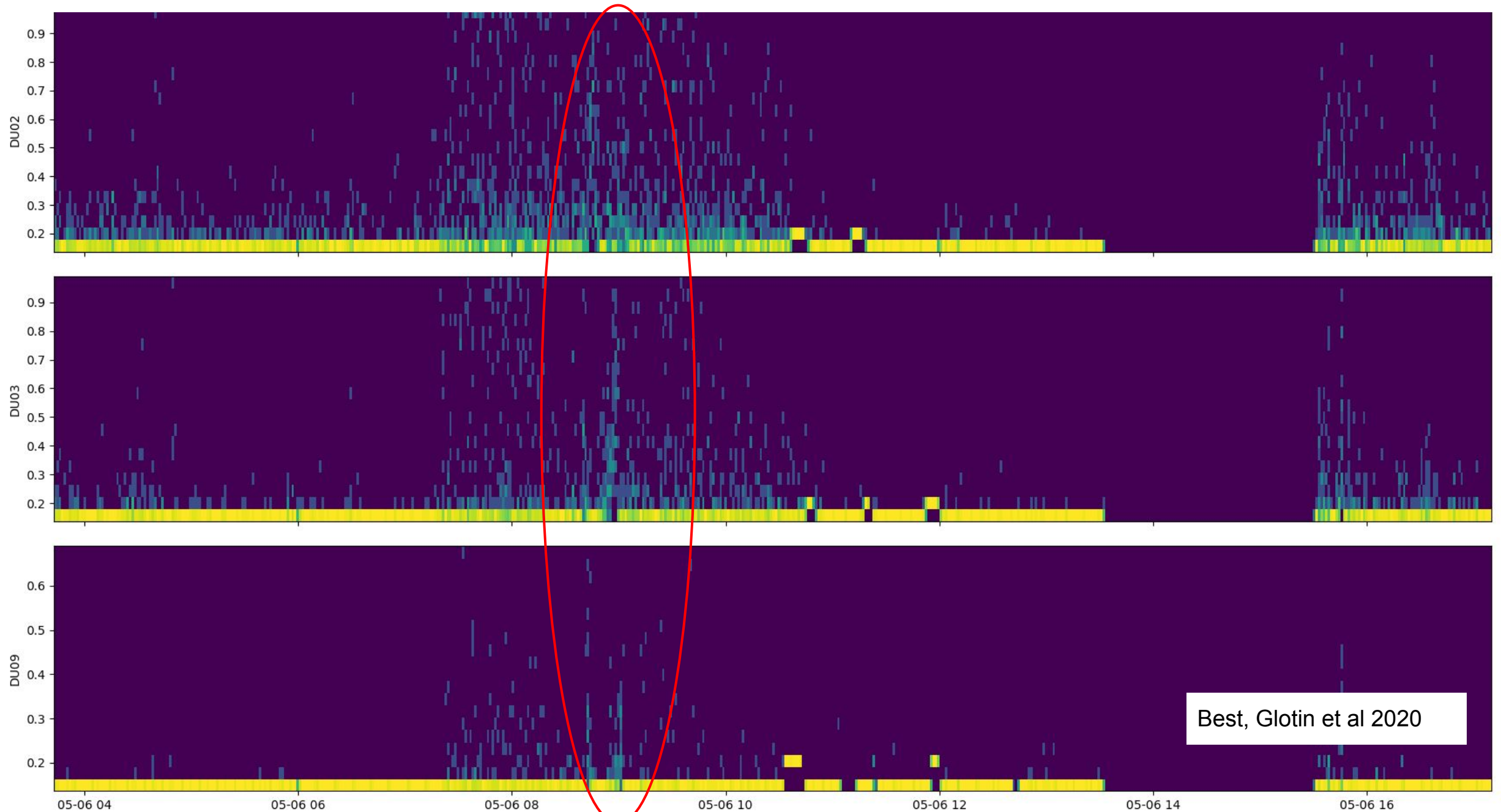
Poupard ... Glotin, Real-time passive acoustic 3d tracking of deep diving cetacean by small non-uniform mobile surface antenna, ICASSP 2019



A global overview of what we can discover here... The biggest hunters of the earth, in group...



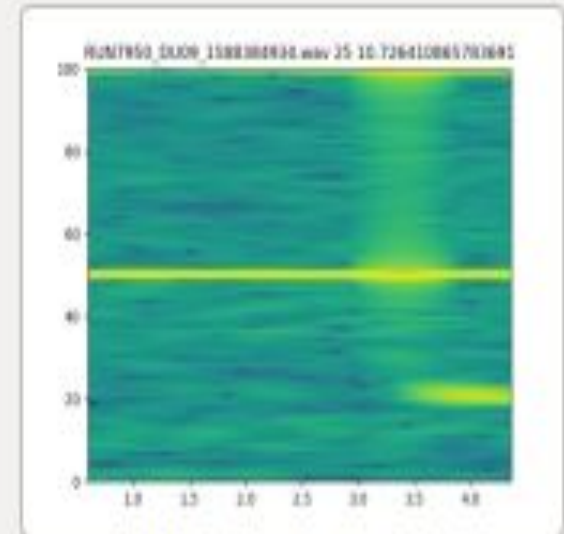
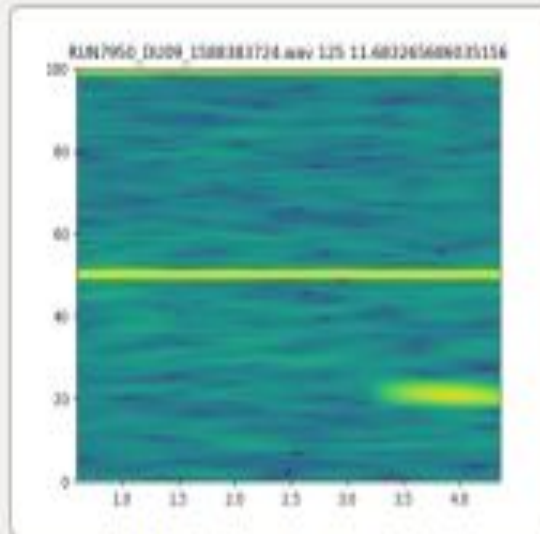
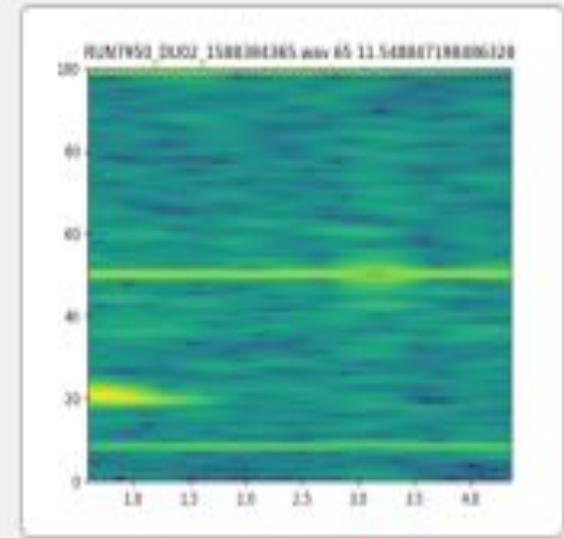
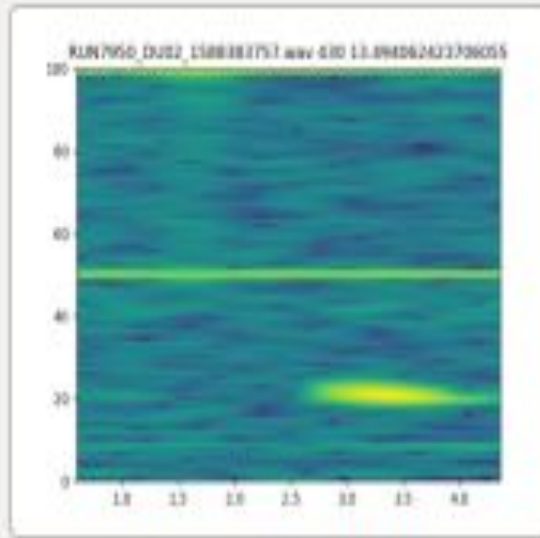
Deep learning listening 10 hours on KM3Env hydrophones, spring 2020 show



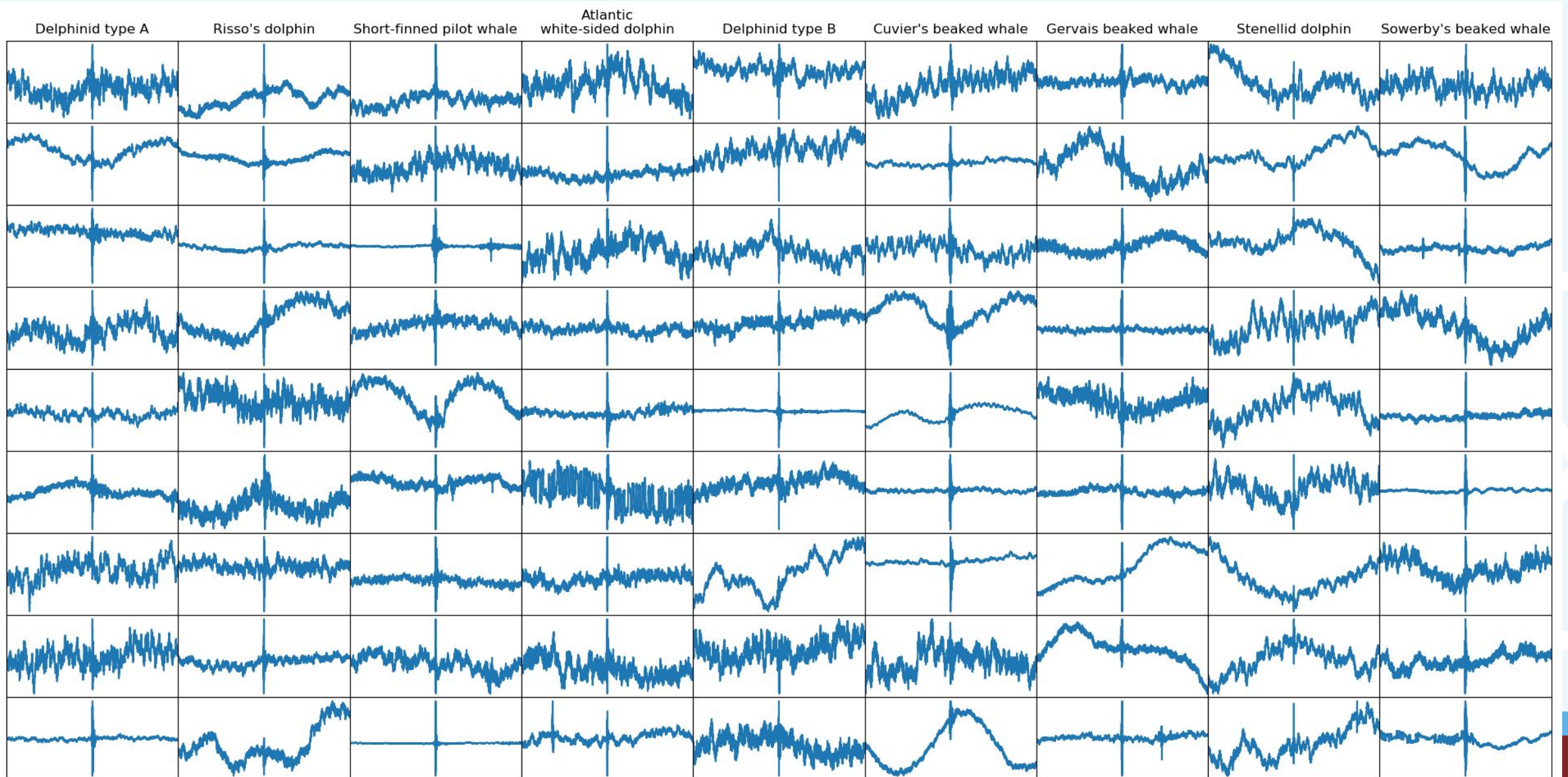
automatically detected
(CNN at LIS Toulon)

Fin whale pulses
(Rorqual)

from KM3Env



From which is this Biosonar ? Help us with Reinforce to follow cetaceans !





more ? = <http://bioacoustics.lis-lab.fr>

REINFORCE

REsearch Infrastructures FOR Citizens in Europe

Join our community



www.reinforceeu.eu



[company/reinforceeu](https://www.linkedin.com/company/reinforceeu)



[@ReinforceEU](https://twitter.com/ReinforceEU)

